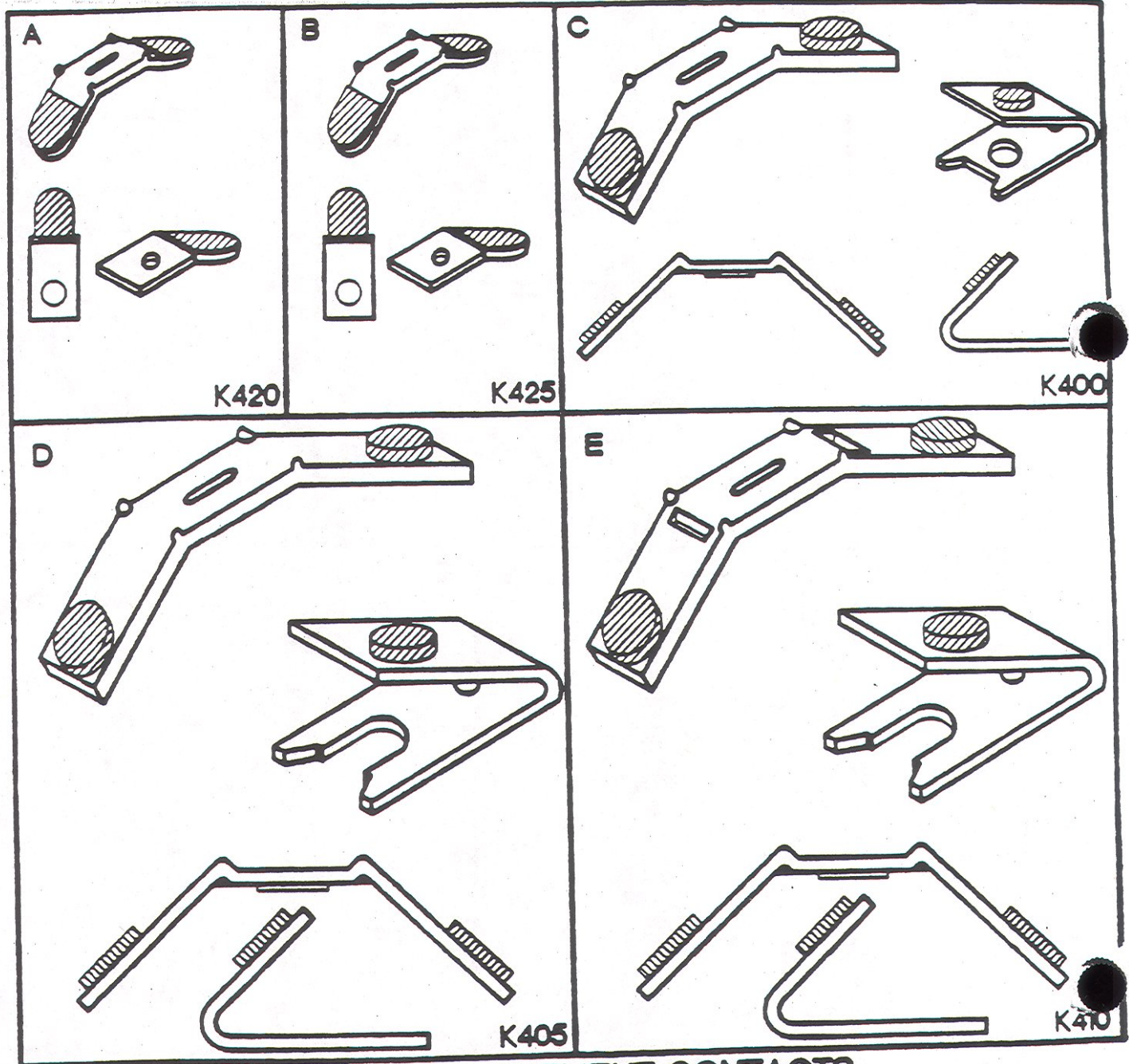


GENERAL ELECTRIC

100, 200, 300-LINE

SIZE	REF.	OEM#	HOYT#
0	A	546A300G002/010	K420 •
1	B	546A301G002/053	K425 •
2	C	546A780G002/051	K400
3	D	55-153677G002	K405
4	E	55-153678G002	K410

• SIZES 0 AND 1 ARE 4 POLE ALL OTHERS ARE 3 POLE
 NOTE: ALL NECESSARY HARDWARE PACKAGED WITH KIT.



HOYT REPLACEMENT CONTACTS